



Description: Switchback Headlight

Application: 17-18 Ford Superduty F-250/350 Headlight installation



Tools required:

Large flat head screwdriver, small flat head screwdriver
3/8 driver ratchet, 3/8 extension & 10mm socket

Step 1: Open hood, and disconnect
negative lead with 10mm socket.



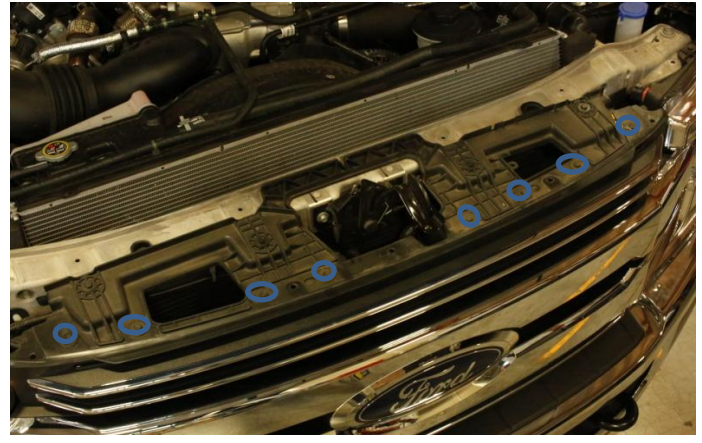
Step 2: Remove 13 total push tab fastener
from radiator shroud



Closer image of how to remove
fastener with small flat head



Step 3: Remove radiator shroud and store in safe place.



Step 4: Remove eight 10mm bolts from the top of the grill.



Step 5: Before removing the grill, you have to detach grill from headlight, grip the upper and lower half of grill and tug. Repeat process on right side.



Step 6: Grip the upper and lower half of the grill and tug on the grill until you detach two fasteners from the headlight.



Step 7: In order to remove the grill from the truck, you will have to detach 4 grey clips within the grill using a long flat head screwdriver.



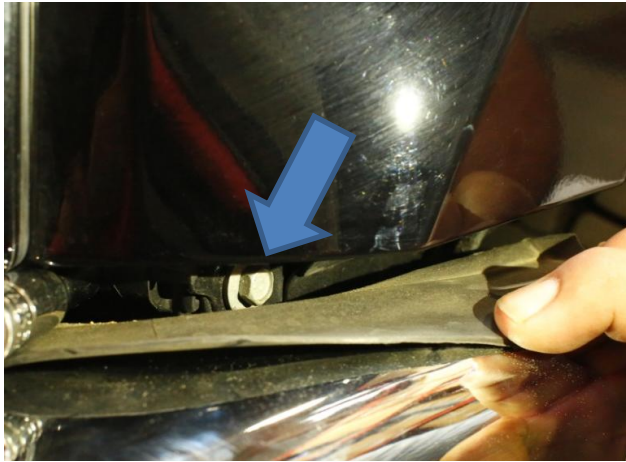
Step 8: Hold grill with two hands and store grill in a safe location.



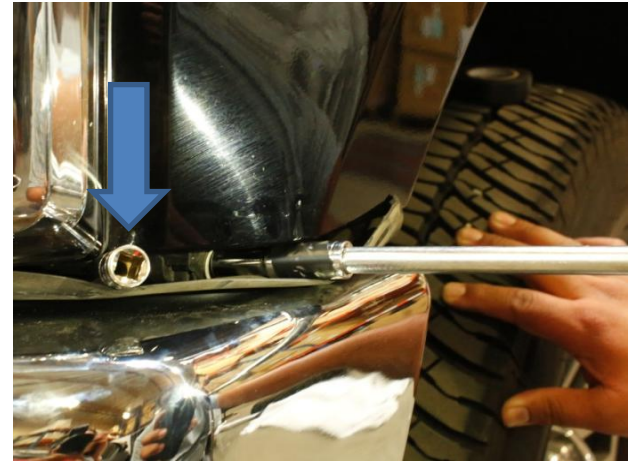
Step 9: In order to remove OEM headlight, you have to remove a total of four 10mm bolts.



Step 10: Remove one 10mm bolt from top of headlight.



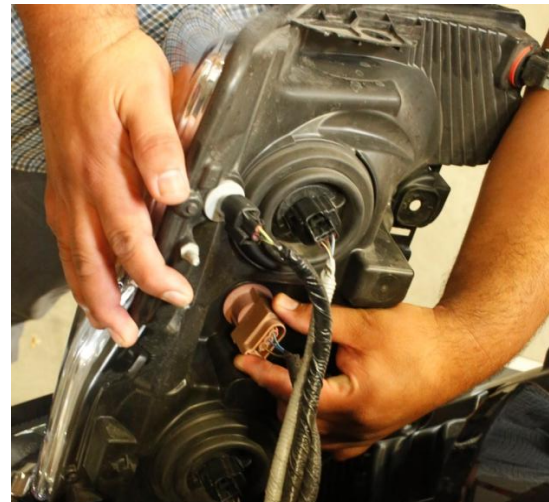
Step 11: Between the fender and bumper, peel back the rubber strip to access the last 10mm bolt.



TIP: I used a 10mm socket to hold back the weather/rubber strip.



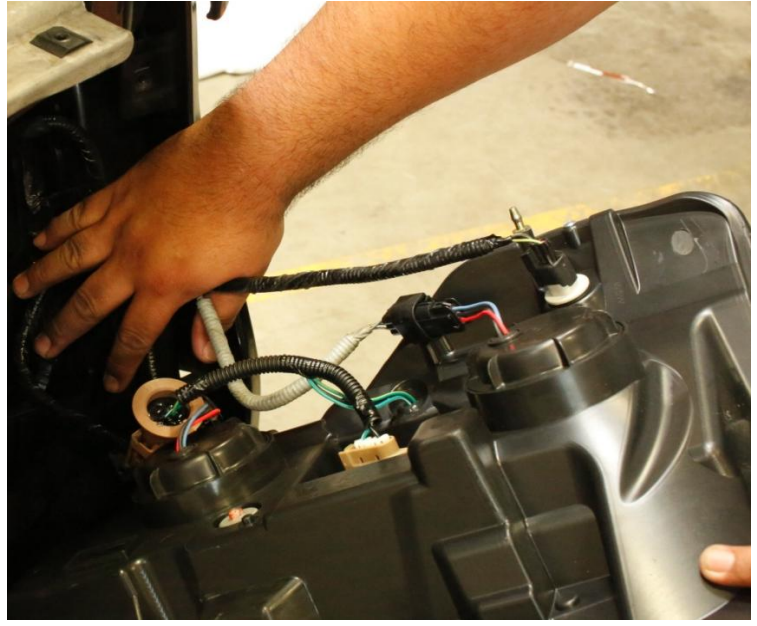
Step 12: Push down on the OEM headlight and pull out from the top.



Step 13: Disconnect the OEM harnesses from the headlight and remove OEM headlight.



Step 14: Install the Anzo headlight, connect harness to new headlight.



Step 15: When installing Anzo headlight, move the harness wires to the side.



Step 16: Hold the Anzo headlight in place and secure headlight with factory four 10mm bolts.



Step 17: Check fitment before tightening down all four 10mm bolts.

Reverse Steps 1-7 to install grill and shroud.



Step 18: Before driving truck on public road, please check full operation of the Anzo headlight.

**Parking light
DRL**



Driver side switchback - Amber LED

Right Turn signal



Passenger side switchback - Amber LED

Left Turn signal

AnzoUSA™ products are covered, by a limited one (1) year warranty, to be free of manufacturer's defects. However, certain AnzoUSA™ product categories have warranty policies which differ from this standard, please contact your representative for detailed category information. Damage due to improper installation or road hazards is not covered. Seller and manufacturers' only obligations shall be to replace the product proven to be defective. Neither seller nor manufacturer shall be liable for any injury, loss or damage, direct or consequential, arising out of the use of or the inability to use the product. Before using, user shall determine the suitability of the product for its intended use, and user assumes all risk and liability whatsoever in connection therewith.