



FILTERS

COLD AIR INTAKE

INSTALLATION INSTRUCTIONS:

P/N: 75-5103 / 75-5103D





FILTERS

BREATHE EASY. YOUR ENGINE & WARRANTY ARE PROTECTED.™

Thank You! for purchasing your new S&B Filters intake kit. If at any time you need additional assistance with installation or have any other questions or comments, feel free to call our customer service department at 909-947-0015. You can also take advantage of our live chat at www.sbfilters.com and connect with an S&B representative immediately. We hope you enjoy your new S&B Filters product and thank you for your continued support. Breathe Easy. Your Engine and Warranty Are Protected.

VEHICLE APPLICATION:

YEAR: 2017 - 2018

MAKE: Chevrolet / GMC

MODEL: 2500/3500

ENGINE: 6.6L Duramax

APPROX. INSTALL TIME: 0HRS | 30MIN

TOOLS REQUIRED:

- 8mm, 10mm, 13mm Wrench/Socket
- T20 Torx
- Phillips Screwdriver
- Panel Popper

NOTES:

Kit may not fit with the following Aftermarket Parts installed:

- Body Lift or Lowering Kit
- Custom Hood
- Throttle Body Spacer/ Upgrade

CARB STATUS - PENDING

Product will be submitted to Air Resources Board for approval shortly.

*Not Legal for use in CA or other states adopting CA emissions standards"
See Page 2 for more info.*

S&B FILTER MAINTENANCE:

- Cleanable (KF-1063). If the enclosed filter is Red, it came preoiled from the factory. Please visit www.sbfilters.com for exact oil amount required after cleaning.
- Disposable (KF-1063D). If the enclosed filter is White, it is a disposable filter and should be discarded once it reaches capacity. This filter **does not require oil**. For more info on S&B's disposable filter, visit www.sbfilters.com.

BEFORE YOU START

- Please read the entire product guide before proceeding.
- Ensure all components listed on pages 3 & 4 are present.
- If you are missing any of the components, call our customer support at (909) 947-0015.
- Do not work on your vehicle while engine is hot.
- Make sure the engine is turned off and the vehicle is in Park or the Parking Brake is set.

RELATED ITEMS FOR YOUR PURCHASE

Order Online today at www.sbfilters.com or through your local S&B distributor.



Filter Wrap
SKU# WF-1059



Replacement Cotton Filter
SKU# KF-1063



Replacement Dry Filter
SKU# KF-1063D



**Precision II:
Cleaning & Oil Kit**
SKU# 88-0008

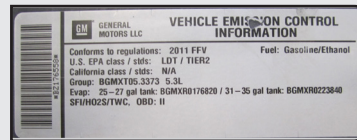
Intake Box Plug Testing

Stock intake boxes are a significant contributor to poor air flow which is why S&B designs custom air boxes with secondary and/or enlarged openings. With that said, S&B recognizes the benefits of cooler air, so we have included a plug to seal off the opening if so desired. For optimal performance, we recommend that the intake be used without the end cap except in conditions of extreme heatwave.

Performance Testing

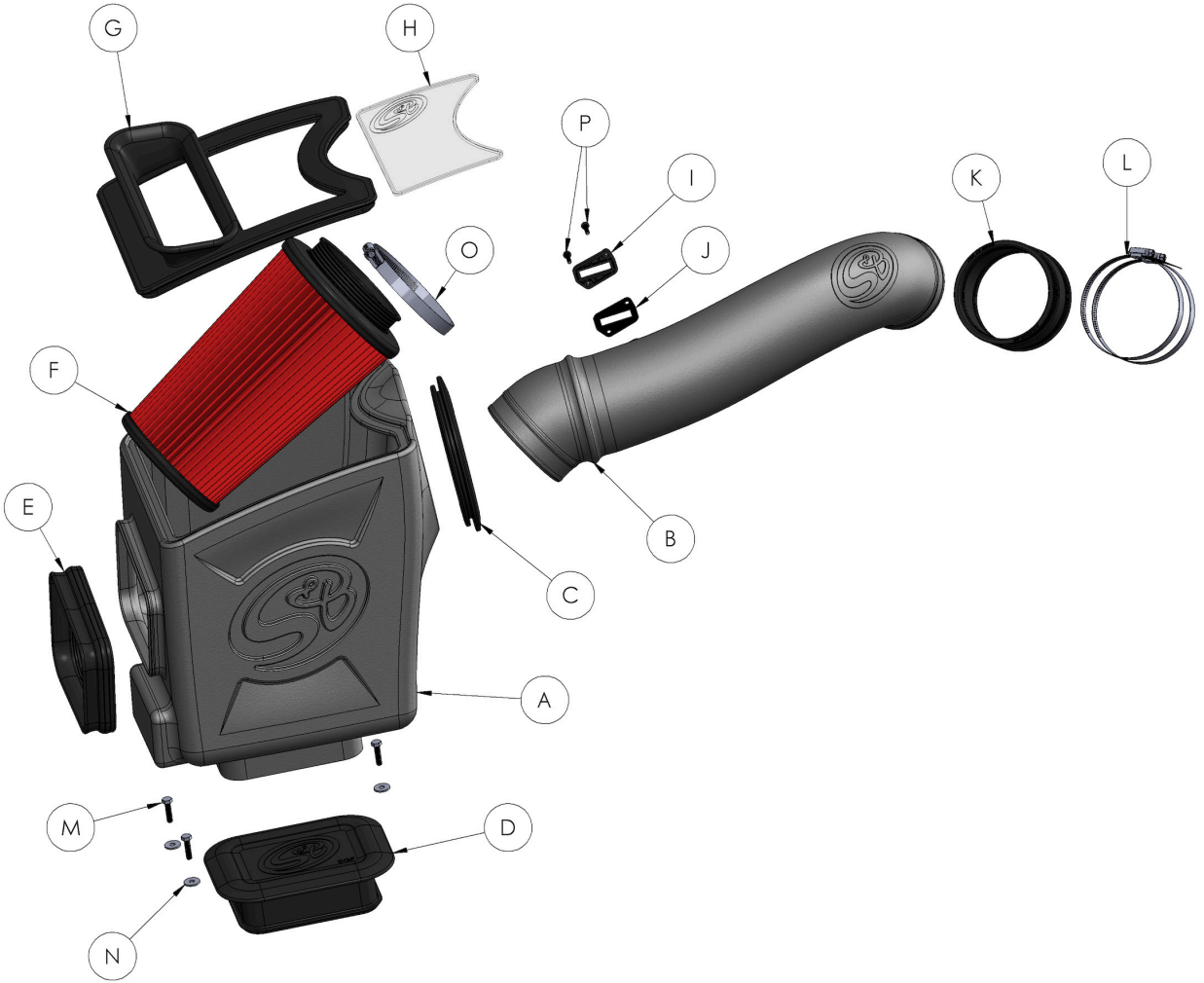
- After your installation is complete engage parking brake and start your engine. Listen for abnormal noises. If an air leak is detected, re-inspect hoses and connections as they may need to be repositioned and tightened.
- S&B FILTERS recommends that you keep your OE intake system in the event it is required in the future.
- In order to maintain your warranty, all connections and components must be checked periodically for alignment and for proper tension on all connections. Failure to do so may void your warranty.
- Use only S&B FILTERS cleaning and oil products to service your filter. Using any other brand oil and/or cleaners on your S&B air filter may void your warranty.

Warning! If your vehicle has a Vehicle Emission Control Information decal affixed to the factory airbox, a new replacement label must be obtained and installed in a readily visible position in the engine compartment in order to remain CARB compliant. Failure to do so will prevent the vehicle from passing a smog check. Replacement labels can be ordered from your local dealership. Regulations state that the VEI label shall not be affixed to any equipment which is easily detached from the vehicle. Label placement, under the hood on a painted surface is recommended.



Emissions Standard The California Air Resource Board (CARB) requires that an E.O. Identification label be applied to the vehicle in order to pass a smog check inspection when a Performance Intake Kit has been installed. You must place the E.O. Label provided on or near the intake kit after installation so that a smog check technician can easily verify the E.O. Number. Check the status of the exemption process by looking up a specific part number at www.sbfilters.com. The CARB Exemption number and/or status is listed under the Product Details section for each part number. If the status shows as "Pending," CARB has yet to issue an exemption but the product has been submitted. Products that have not been issued an E.O. number are street legal in most states, but may not be used on emission controlled vehicles in the state of California and are for off road use only. If you purchased your kit from S&B Filters directly, we will automatically mail you your Exemption Sticker when it is issued to us. If you purchased your kit from an authorized S&B Filters Dealer, log onto our web site and register to receive your Exemption Sticker.

EXPLODED VIEW:



PARTS LIST: 75-5103/75-5103D

ITEM	QTY	DESCRIPTION	PART NUMBER
A	1	INTAKE BOX	AL1308B-00
B	1	INTAKE TUBE	AL1308-00
C	1	TUBE SEAL	AI1650C-00
D	1	BOX PLUG	AI1559C-00
E	1	FENDER SEAL	AI2000C-00
F	1	AIR FILTER	KF-1063
G	1	HOOD SCOOP/LID SEAL	AI1999C-00
H	1	CLEAR LID	AI2001-00
I	1	MAF PLATE	AI1822-00
J	1	MAF GASKET	AI1823-00
K	1	COUPLER	AI1354C-00
L	2	HOSE CLAMP, #64	AG1018-00
M	3	BOLT, HHCS, M6	AI1415-00
N	3	WASHER, OVERSIZED, M6	AI1755-00
O	1	HOSE CLAMP, #72	AG1009-00
P	2	SCREW, SEMS, #8-32	AI1837-00

AM10360-00 REV-D 08/02/2018

HARDWARE PACKS
HP1526-00
AG1018-00
HP1407-00
AI1837-00
AI1822-00
AI1823-00
HP1527-00
AI1415-00
AI1755-00
AI1327-00

INSTALLATION STEPS:

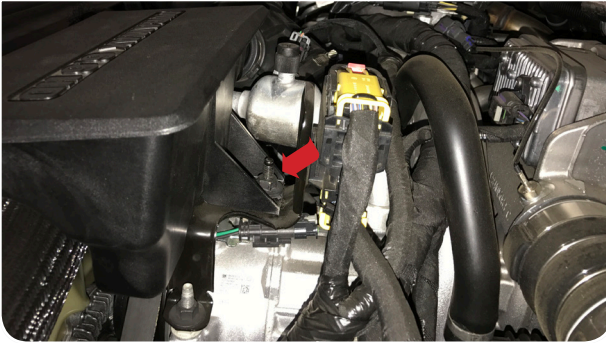
- 1** With the ignition switched off and the parking brake set, disconnect the negative battery cables on both batteries. **Note: Failure to disconnect the battery may cause the CEL to illuminate upon completion of the installation and subsequent operation. Do not skip this step!**
Tool Required: 10 mm Socket/Wrench



- 2** Disengage the red locking clip, press down on the tab, then pull out to disconnect the electrical harness from the MAF sensor.



- 3** Remove the nut securing the stock resonator.
Tool Required: 13 mm Socket/Wrench



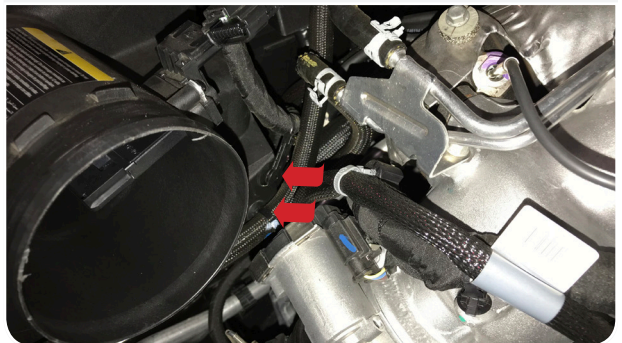
- 4** Loosen the hose clamp at the resonator then remove the resonator from the intake tube.
Tool Required: 8mm Socket/Wrench



- 5** Loosen the hose clamp at the turbo inlet and intake box then remove the intake tube from the vehicle.
Tool Required: 8mm Socket/Wrench



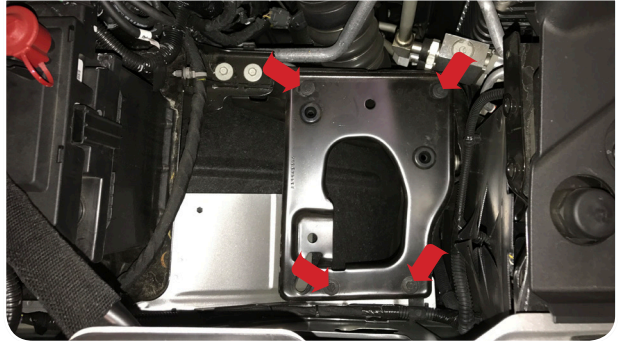
- 6** Disconnect the two black clips securing the MAF electrical harness to the intake box.
Tool Required: Panel Popper



- 7** Lift the intake box to pull the prongs from the grommets and remove the intake box from the vehicle.



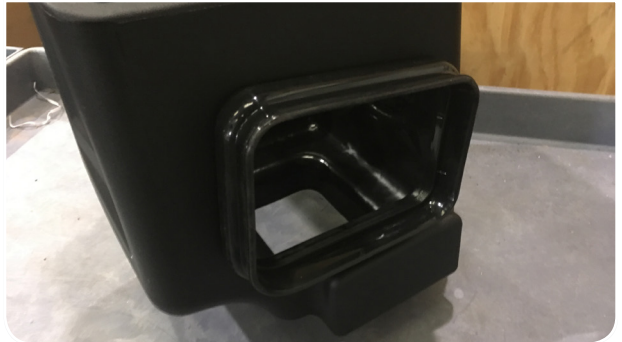
- 8** Remove the four bolts securing the intake box tray, then remove the tray from the vehicle.
Tool Required: 10 mm Socket/Wrench



- 9** Install the Tube Seal (C) onto the Intake Box (A).



- 10** Install the Fender Seal (E) onto the Intake Box (A).



- 11** Determine if you want to install the Box Plug (D) onto the Intake Box (A) or leave it open. See the "Intake Box Plug" note on Page 2 for more information. If the Box Plug is desired, simply press the Box Plug into the box opening until it snaps into place.



- 12** Carefully remove the MAF sensor from the stock intake tube then install the sensor onto the S&B Intake Tube (B) with the #8-32 Screws (P), MAF Plate (I) and MAF Gasket (J).
Tool Required: T20 Torx, Screwdriver, Phillips Screwdriver



INSTALLATION STEPS:

- 13** Install the Coupler (K) with #64 Hose Clamps (L) onto the Intake Tube (B). Slide the coupler as far up the intake tube as possible. Do not tighten the hose clamps at this time.



- 14** Place the Intake Box (A) into the vehicle.



- 15** Align the holes on the Intake Box (A) with the mounting holes on the vehicle then install the three M6 Bolts (M) and Washers (N) and tighten.
Tool Required: 10mm Socket/Wrench



- 16a** Insert the Intake Tube (B) into the Intake Box (A) with the intake tube angled upwards as shown below.



- 16b** Rotate the intake tube towards the turbo inlet and slide the coupler onto the turbo inlet. Tighten the two #64 Hose Clamps (L).
Tool Required: 8mm Socket/Wrench



- 17** Install the Air Filter (F) onto the Intake Tube (B) and tighten the #72 Hose Clamp (O).
Tool Required: 8mm Socket/Wrench



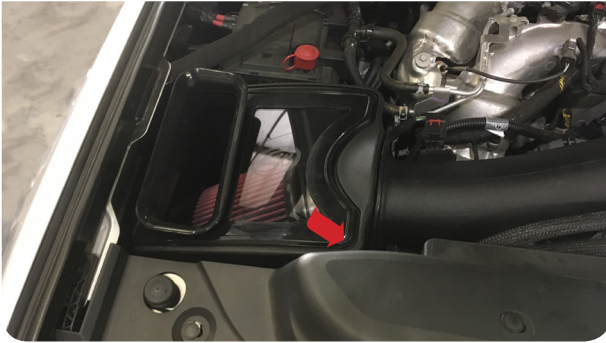
18 Remove the protective covering on the Clear Lid (H).



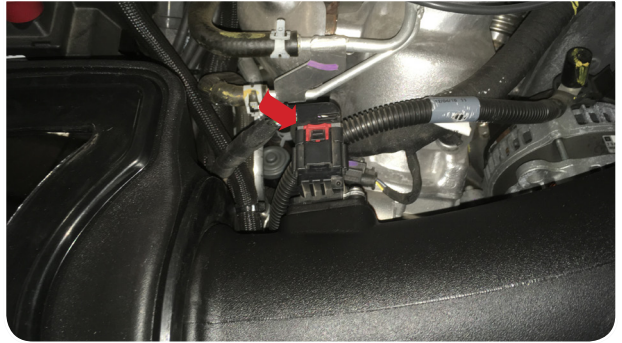
19 Install the Clear Lid (H) into the groove on the Hood Seal (G).



20 Install the Hood Seal (G) onto the Intake Box (A). It is a snap fit and will press right onto the box. Double check around the seal to make sure it is fully seated and not being caught anywhere.
Note: It is easier to install by putting the lid side corners in first, then pressing down around the rest of the seal.



21 Reconnect the electrical harness into the MAF sensor and engage the red locking clip.



22 Reconnect the negative battery terminals on both batteries. Inspect your installation, make sure the kit is properly positioned and all fasteners are secure. Keep all stock parts in case you ever need to reinstall the stock intake assembly. Affix the ID label near the intake kit. The installation is now complete
Tool Required: 10mm Socket/Wrench

